



APPENDIX

A. PLANS AND RESOURCE IMAGERY



LANDSCAPE UNITS

- 1. TWIN OAK MEADOW
- 2. POND VALLEY
- 3. DRIVE AND MEADOWS
- 4. HILTOP HOUSE AND GARDENS
- 5. NORTHEAST WOODLANDS
- 6. MACOMB ENTRY AND WOODLANDS

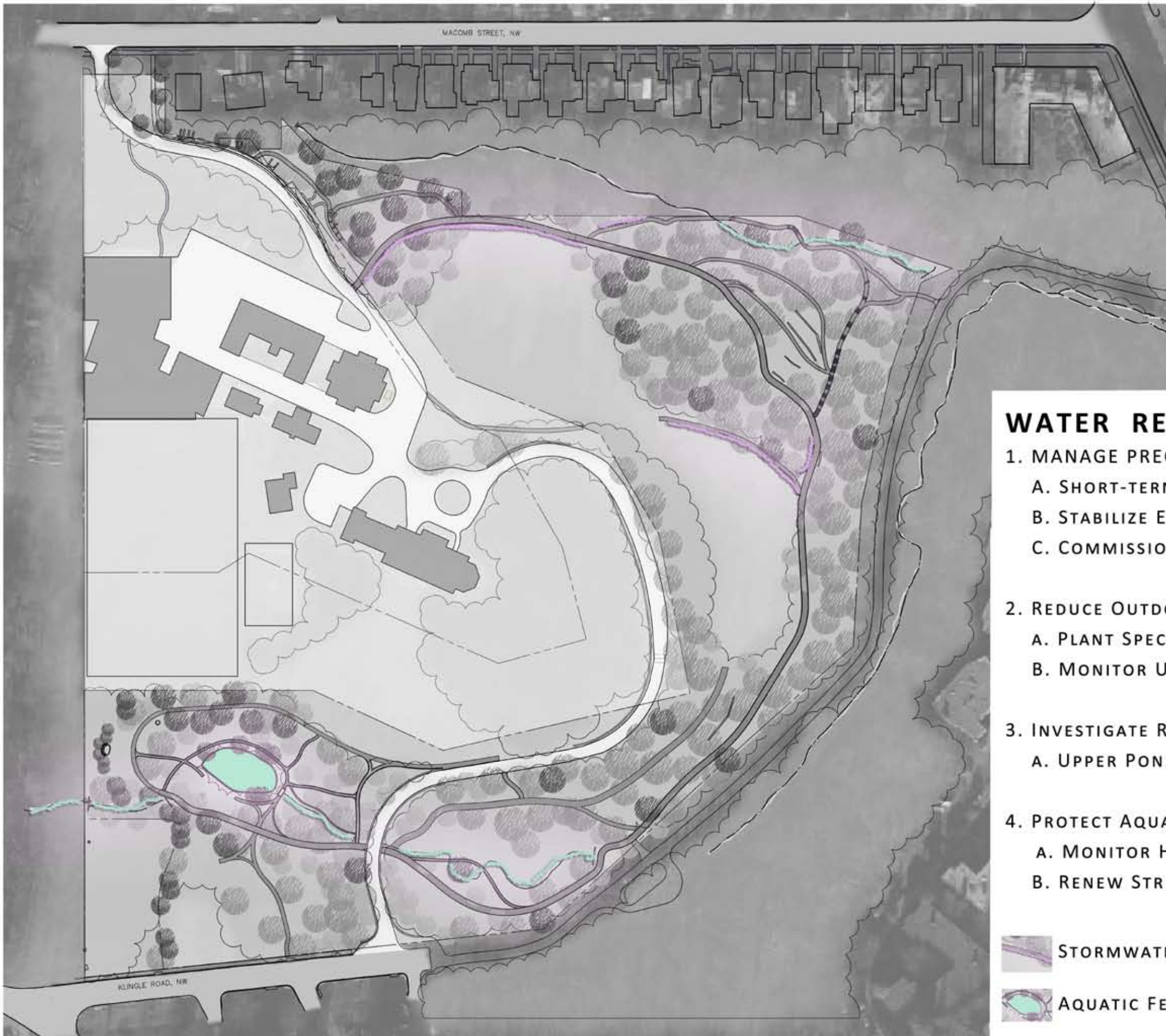
Tregaron Preservation & Sustainability Plan

Tregaron Conservancy, Washington D.C.

Date: **OCTOBER 2017**

PLATT-SHIPMAN
LANDSCAPE
UNITS
1915

L0.0



WATER RESOURCES

1. MANAGE PRECIPITATION ON SITE
 - A. SHORT-TERM PATH STABILIZATION
 - B. STABILIZE ERODIBLE SOILS
 - C. COMMISSION STORMWATER STUDY

2. REDUCE OUTDOOR WATER USAGE
 - A. PLANT SPECIFICATION
 - B. MONITOR USE

3. INVESTIGATE RAINWATER HARVESTING
 - A. UPPER POND VALLEY

4. PROTECT AQUATIC ECOSYSTEM
 - A. MONITOR HEALTH
 - B. RENEW STREAM BANKS AND PLANTINGS

-  STORMWATER RENEWAL
-  AQUATIC FEATURE RENEWAL

Tregaron Preservation & Sustainability Plan

Tregaron Conservancy, Washington D.C.

Date: OCTOBER 2017

WATER RESOURCE TREATMENT

LO.1



VEGETATION AND SOILS

1. CONTROL + REMOVE INVASIVE SPECIES
2. CONSERVE + USE APPROPRIATE PLANTS
 - A. NON-INVASIVE
 - B. SHIPMAN
 - C. ARCHITECTURE
 - D. NATIVE
 - C. BIODIVERSITY
3. CONSERVE + STABILIZE HEALTHY SOILS
4. PLAN FOR SUSTAINABLE MAINTENANCE
 - A. MASTER SCHEDULE
 - B. ZONE GARDENING
 - C. INTEGRATED PEST MANAGEMENT
 - D. REDUCE MOWING
 - E. REDUCE EMISSIONS

Tregaron Preservation & Sustainability Plan

Tregaron Conservancy, Washington D.C.

Date:

OCTOBER 2017

SOILS & VEGETATION
TREATMENT

L0.2



-  HISTORIC BRIDLE PATH
-  SECONDARY FOOT PATH
-  STEPPING STONE PATH

CIRCULATION, HARDSCAPE & OBJECTS

1. MAINTAIN ON SITE FEATURES (PATHS)
 - A. SHORT TERM STABILIZATION
 - B. EDGE DEFINITION
 - C. RECAPTURE LOST PATHS
 - D. IMPROVE SAFETY + CONNECTIVITY
2. PROTECT AND MAINTAIN HISTORIC FEATURES
 - A. ALIGNMENT
 - B. RE-USE ON SITE MATERIALS
 - C. RECAPTURE LOST FEATURES (BENCH)
 - D. REMOVE ANACHRONISTIC FEATURES
3. PLAN FOR SUSTAINABLE MAINTENANCE
 - A. MATERIALS STORAGE
 - B. RECYCLE ORGANIC MATTER
4. PROMOTE HUMAN HEALTH + WELL-BEING
 - A. TRAILS
 - B. OUTDOOR CLASSROOM
 - C. EXHIBIT

Tregaron Preservation & Sustainability Plan

Tregaron Conservancy, Washington D.C.

Date: OCTOBER 2017

CIRCULATION & HARDSCAPE TREATMENT

L0.3



- LEGEND**
-  LARGE SHADE TREES
 -  SMALL FLOWERING TREES
 -  BRIDLE PATH 6'
 -  SECONDARY PATHS 3'-6"
 -  RECONSTRUCTED FEATURES

Tregaron Preservation & Sustainability Plan

Tregaron Conservancy, Washington D.C.

Date: **OCTOBER 2017**

LANDSCAPE
TREATMENT PLAN

L1.0



Tregaron Preservation & Sustainability Plan

Tregaron Conservancy, Washington D.C.

Date: **OCTOBER 2017**

LANDSCAPE
COMPATIBLE USE /
PROGRAM AREAS

L1.1