

SOURCES:

- 1 < ELLEN BIDDLE SHIPMAN ARCHIVES
- 28 < FRANCES BENJAMIN JOHNSTON PHOTOGRAPHS FROM THE LIBRARY OF CONGRESS
- 34 < JOHN WALLACE GILLIES PHOTOGRAPH FROM BEAUTIFUL GARDENS IN AMERICA BY LOUISE SHELTON



**TREGARON**  
*Cultural Landscape Report*  
 Cleveland Park, Washington DC

Client:  
**TREGARON LIMITED PARTNERSHIP**

Landscape Architect:  
**HERITAGE LANDSCAPES**  
 Preservation Landscape Architects & Planners

501 Lake Road  
 Charlotte, VT 05445  
 802.425.4330

34 Wall Street  
 Norwalk, CT 06850  
 203.852.9966

Architect:  
**MILLER HULL PARTNERSHIP**

71 Columbia, 6th Floor  
 Seattle, WA 98104  
 206.682.6837

This drawing is the property of HERITAGE LANDSCAPES and is not to be reproduced or copied in whole or in part. It is to be returned upon request.

©HERITAGE LANDSCAPES

Drawing Title:  
**Platt-Shipman Era Photo Locations**

Date:  
 December 15, 2005

Drawing Number:  
 5



1



2



3



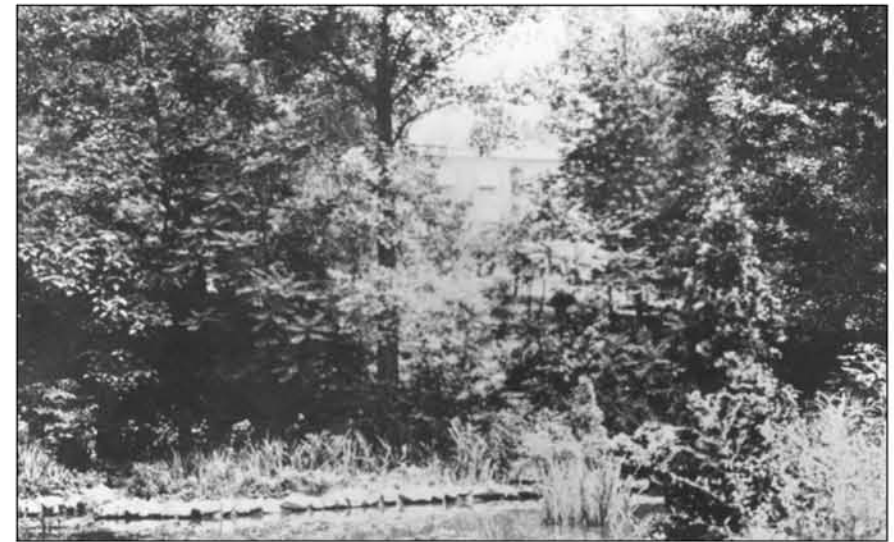
4



5



6



7



8



9



10



11



**TREGARON**  
*Cultural Landscape Report*  
*Cleveland Park, Washington DC*

*Client:*  
**TREGARON  
LIMITED  
PARTNERSHIP**

*Landscape Architect:*  
**HERITAGE  
LANDSCAPES**  
*Preservation Landscape Architects &  
Planners*

*501 Lake Road  
Charlotte, VT 05445  
802.425.4330*

*34 Wall Street  
Norwalk, CT 06850  
203.852.9966*

*Architect:*  
**MILLER HULL  
PARTNERSHIP**  
*71 Columbia, 6th Floor  
Seattle, WA 98104  
206.682.6837*

This drawing is the property of  
HERITAGE LANDSCAPES and is  
not to be reproduced or copied in  
whole or in part. It is to be returned  
upon request.

©HERITAGE LANDSCAPES

*Drawing Title:*  
**Platt-Shipman Era  
Photo Sheet 6**

*Date:*  
**December 15, 2005**

*Drawing Number:*  
**6**



12



13



14



15



16



17



18



19



20



**TREGARON**  
*Cultural Landscape Report*  
*Cleveland Park, Washington DC*

*Client:*  
**TREGARON  
LIMITED  
PARTNERSHIP**

*Landscape Architect:*  
**HERITAGE  
LANDSCAPES**  
*Preservation Landscape Architects &  
Planners*

*501 Lake Road  
Charlotte, VT 05445  
802.425.4330*

*34 Wall Street  
Norwalk, CT 06850  
203.852.9966*

*Architect:*  
**MILLER HULL  
PARTNERSHIP**  
*71 Columbia, 6th Floor  
Seattle, WA 98104  
206.682.6837*

This drawing is the property of  
HERITAGE LANDSCAPES and is  
not to be reproduced or copied in  
whole or in part. It is to be returned  
upon request.

©HERITAGE LANDSCAPES

*Drawing Title:*  
**Platt-Shipman Era  
Photo Sheet 7**

*Date:*  
**December 15, 2005**

*Drawing Number:*  
**7**



**TREGARON**  
*Cultural Landscape Report*  
*Cleveland Park, Washington DC*

*Client:*  
**TREGARON  
LIMITED  
PARTNERSHIP**

*Landscape Architect:*  
**HERITAGE  
LANDSCAPES**  
*Preservation Landscape Architects  
Planners*

*501 Lake Road  
Charlotte, VT 05445  
802.425.4330*

*34 Wall Street  
Norwalk, CT 06850  
203.852.9966*

*Architect:*  
**MILLER HULL  
PARTNERSHIP**  
*71 Columbia, 6th Floor  
Seattle, WA 98104  
206.682.6837*

This drawing is the property of  
HERITAGE LANDSCAPES and  
not to be reproduced or copied in  
whole or in part. It is to be return  
upon request.

©HERITAGE LANDSCAPES

*Drawing Title:*  
**Platt-Shipman Era  
Photo Sheet 8**

*Date:*  
**December 15, 2005**

*Drawing Number:*  
**8**



21



22



23



24



25



26



27



28



29